

A man and a woman are walking down a set of stairs in a modern building. The man is wearing a dark suit and the woman is wearing a dark blazer over a white top. They are both smiling and looking towards each other. Large windows in the background show a view of trees and foliage.

We create
Natural Indoor
Atmospheres

A close-up shot of a green plant with small, round, red flowers, likely a rosemary plant, set against a blurred background of green foliage.

Inhalt

We create Natural Indoor Atmospheres	01
Products KERMI	16
Products PROLUX	60
More than a system	66
Products arbonia	74

NIA – Natural Indoor Atmospheres

We create
Natural Indoor
Atmospheres





NIA – Natural Indoor Atmospheres

Comfort in all indoor spaces

Comfort in all indoor spaces

The best temperature in a room is one that is just right. One that is not too warm and not too cold, one that is pleasant and creates rooms that we enjoy spending time in. We achieve this with holistic systems whose components smartly temper every space, from the living room to the factory floor.







The perfect atmosphere for work and relaxation

The perfect atmosphere for work and relaxation

Indoor air is only noticeable when it is not good. Stale air, dry air, unpleasant odors - all this disturbs our well-being and our concentration. A coordinated heating and cooling system that can be intelligently controlled supports our well-being just as much as reliable ventilation, which we only notice when it is good.







A sustainable living space to protect the climate

A sustainable living space to protect the climate

A natural indoor climate that serves more than just us. Generating and storing renewable energy. Technologies that conserve resources. Sustainable living spaces arise from the interaction of all components and are the path to a future that saves energy and protects the climate.





Products

KERMI



x-change[®] dynamic pro

Maximum efficiency, minimal sound emissions and the latest control technology

- **Output:** Three different power ratings (S, M and L) as an individual or a cascade system up to 60 kW (project-specific and in an individual case up to 100 kW)
- **Low-noise:** We are the benchmark for virtually silent operation with 47.2 DB at A7/W55
- **Efficiency:** Top class A+++ with COP 4.95 (A2/W35) when using future-proof coolant R290
- **Service:** Easy to service thanks to intelligent assemblies and online access
- **Installation:** Easy installation due to pre-integrated components (deaerator and safety valve)
- **Control expertise:** Intelligent x-center pro[®] ensures maximum efficiency from installation to initial operation
- **Independence:** The heat pump uses the surplus energy from the home's own solar power system using the integrated solar power function
- **Durability:** Very high-quality and robust housing made of powder-coated aluminium and galvanised sheet steel





x-buffer®

flex pipe with hydro module light pro

Hygiene storage tank especially for x-change heat pumps

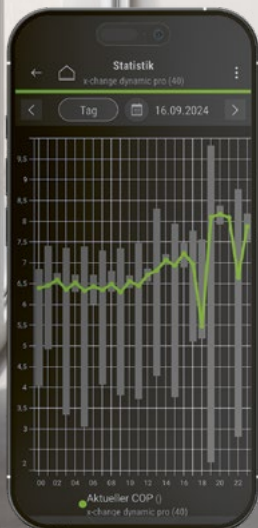
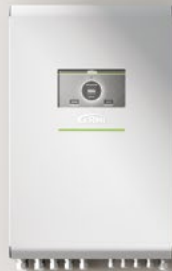
- **Compatibility:** Hygiene storage tank for optimal layering and hygienically making hot water available, especially for use with the x-change dynamic pro heat pump. Content 800l or 1000l.
- Installation efficiency: Control and system components pre-assembled with cables ensures correct and fast installation
- Solar power ready: Heating rods with different outputs can be integrated and use solar-generated electricity efficiently
- Interim operation: Can also be operated without the heat pump, e.g. heat exchange in the winter
- **Economy:** Price advantage due to high degree of pre-assembly



x-buffer[®] combi pro

Heat pump control, buffer and hot water storage in one

- **Efficiency:** 127 liter buffer cylinder for optimum energy use, especially for use with heat pumps
- **Capacity:** Domestic water storage tank 231 litres (204 litres usable) for reliable hot water supply
- **Integration:** Circulation pump for unmixed heating circuit already integrated and ready to go
- **Thermal insulation:** Insulated storage tank with high quality, powder-coated metal housing to minimise heat losses
- **Easy to operate:** Display with x-center[®] pro control unit for intuitive control
- **Installation:** Compact and clever for simple installation and flexible use
- **Interim operation:** Can also be operated without the heat pump, e.g. heat exchange in winter, economy, price advantage due to high degree of pre-assembly
- **Solar power-ready:** Heating rods with different outputs can be integrated and use solar-generated electricity efficiently



x-center[®] pro

This control unit is just a step ahead

- Control expertise: Inhouse know-how and development
- Menu navigation: Intuitive and easy using the 7" touch display or the Kermi x-center app at no extra cost
- **Networking:** Online capability, integration into the building management system and remote maintenance
- Solar power ready: Intelligent use of solar-generated electricity
- Can be expanded: Connection of up to two mixed heating circuits (additional heating circuits can be added)
- **Montage:** Quick and easy installation thanks to a clear structure and integrated contactors for two screw-in radiators





therm-x2® Vmulti

Flexibility in a new dimension

- **Flexibility:** A total of six connection options and various valve positions for a new level of flexibility in meeting individual requirements. Radiator dimensions can also be freely selected after pipe installation when using the centre connection
- **Compatibility:** Fits into existing connections and uses existing fixing portfolio for refurbishment projects
- **Efficiency:** kv-preset valves for optimal performance
- **Installation:** Minimised installation effort with connections completely sealed ex works
- **Comfort:** Ordering effort minimised as suitable for all connection positions
- **Technology:** With original x2-technology for proven efficiency and performance
- **Safety:** No risk of incorrect orders, as the system is suitable for all connection conditions
- **Eligibility for funding:** Eligible for subsidies and rent allowance
- **Availability:** Faster deliveries possible thanks to faster availability from stock



Verteo[®]

Advanced heating technology in a slimline upright format

- **Design:** Slimline, upright format with three front looks to choose from: smooth, finely profiled or distinctly profiled
- **Individuality:** Seven different heights and six lengths with high heat output
- **Versatility:** Wide range of sizes and colours available for customised design options
- **Technology:** With original x2-technology for optimised heat distribution
- **Functionality:** With practical towel rail for additional comfort as an option
- **Flexibility:** For all heat sources, even modern heating systems with low flow temperatures



x-flair®

Ideal radiator for low flow temperatures


- **Efficiency:** Maximum energy savings thanks to original x2technology and optimised performance.
- **Compatibility:** Perfectly compatible with heat pumps and condensing boilers
- Temperature control: Cooling in conjunction with reversible heat pump
- Control unit: Fully automatic control and operation via the thermostatic sensor head for maximum comfort and ease of use
- Low noise: Comfort mode with minimal noise
- **Subsidies:** Attractive state subsidies available for energy-efficient solutions.
- Design versatility: Available in the looks Plan, Profil and Line
- **Flexibility:** With heating cost recording for demand-oriented use as an option
- **Installation:** Plug-and-play delivery and installation as easy as with a standard steel panel radiator



Pateo® flair

Ideal for low flow temperatures

- **Design:** Vertical radiator with elegant, one-piece design front for a modern room atmosphere
- **Efficiency:** Powerful heating and fast air heating, ideal for low-temperature operation
- **Flexibility:** Suitable for operation with all low temperature range heat generators
- **Comfort:** On-demand, low-noise axial fans
- **Refurbishment:** Perfect solution for refurbishments thanks to versatile uses
- **Functionality:** Optional rail for heating towels
- **Innovation:** Patented x-flair technology, especially optimised for use in a bathroom



30 years of
KERMI bathroom
and home
radiators



Tano[®]

Unique slimline, seamless one-piece design

- **Design:** Stylish steel radiator with a shallow depth for space-saving integration
- **Comfort:** Multiple towel storage options
- **Version:** Available in two heights and one length for flexible planning, Tano-E for all-electric operation
- **Hygiene:** Easy clean flat heating plate without pipes and covers
- **Output:** Electric output of 600–800 watts for efficient heat dissipation



30 years of
KERMI bathroom
and home
radiators



Ineo®

Timeless elegance with a special twist

- **Design:** Aluminium radiator with side recess and a timeless, flat design
- Heating zones: Arranged in different ways to easily heat towels
- **Versions:** Available in left and right-hand versions, Ineo-E for all-electric operation
- Radiation component: A high proportion ensures efficient warmth and comfort
- **Colours:** Available in six selected colours

30 years of
KERMI bathroom
and home
radiators



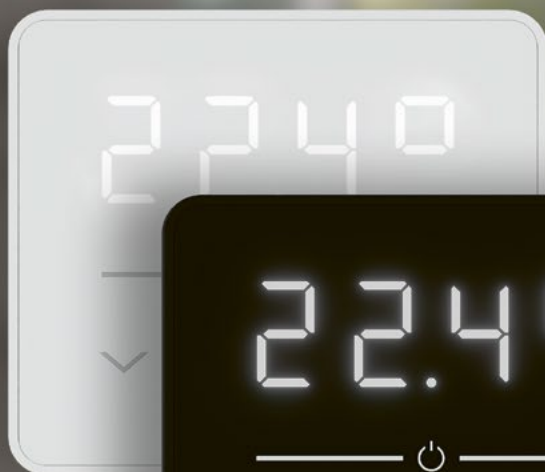


Casteo[®]-E

Clear lines, pure aesthetics

- **Variation:** Compact radiator with hot water or additional electric operation, Casteo-E for all-electric operation or Casteo-D as a replacement radiator with variable hub distance at sides
- **Design:** Steel radiator with unique, modern and timeless design
- **Flexibility:** Can be connected in the centre or on the side
- **Versatile:** Connection to x-net underfloor heating possible with x-link plus connection fitting
- **Technology:** Simple and fast installation thanks to adjustable fixing with Allen screws
- **Comfort:** Ample gaps make it easy to hang towels

30 years of
KERMI bathroom
and home
radiators



Controller WRS/WWWS

Comfort and flexibility controlled and the press of a button

- **Design:** Large 7-segment LED display with a glass front in Black or White
- **Flexibility:** Control up to eight radiators with a heating rod or heating mat
- Performance mode: Boost mode with 60 minutes full power to heat up quickly on demand
- **Installation:** Can be installed as a cable or radio version, depending on requirements
- Eco design compliant: Open-window detection and day-specific weekly program planning directly on the controller



Beams®



Carré®



Oni®



Bryce®

Discover variety

Experience our wide selection of bathroom and home radiators

- Individual designs: From timeless classic to modern and extravagant
- Color variety: Subtle tones or bold accents: to match your style
- Flexible sizes: Perfect for small bathrooms or spacious living rooms
- Operating mode: Choice of hot water mode, additional electric mode or pure electric mode
- High-quality accessories: Towel rails, shelves and more for added convenience

A small selection of our design variety:

Beams®: Functionality in its most beautiful form

Carré®: Minimum space, maximum effect

Bryce®: Warmth in a new light

Oni®: Simplicity and efficiency



Even more variety?

Discover the complete range!

<https://www.kermi.com/en/de/indoor-climate/products/bathroom-and-home-radiators/>



x-well® F-series

Compact ventilation units with heat recovery

- **Versatility:** Available in three power levels (F150, F170, F270) with variable ceiling or wall mounting
- **Heat recovery:** Models F170 and F270 with optional enthalpy heat exchanger for maximum efficiency and comfort
- **Efficiency:** Models with energy efficiency classes A (F150 and F270) and A+ (F170) as well as passive house certification for sustainable and energy-saving solutions
- **Comfort:** Integrated functions such as summer bypass (F170 and F270), demand-based humidity control and constant volume flow control (F150 and F270) for an optimised indoor climate.
- **Hygiene:** Optional x-well® hygienic air filter with high separation rate ensures clean and healthy room air
- **User-friendly:** Intuitive controller makes it easy to control and adjust the ventilation functions

10 years of
KERMI residential
ventilation



Produkt gelistet im
Navigator





x-well® C225 compact ventilation unit

Compact ventilation unit for installation in a cabinet

- Range of applications: Ideal for flats and houses with up to approx. 160 m² living space
- **Design:** Space-saving design with a depth of less than 300 mm and a width of less than 550 mm, suitable for installation in a cupboard
- **Versatility:** Universal type of unit with interchangeable connections and optional air intake connection on the underside of the unit
- Can be retrofitted: Easy-to-integrate preheating coil for added functionality.
- **Control:** Demand-led control using a humidity sensor and constant volume flow control thanks to intelligent fan technology.
- **Hygiene:** Optional x-well® hygienic air filter with extremely high separation rate for healthy room air.
- **Efficiency:** Energy efficiency class A for sustainable and economical operation

10 years of
KERMI residential
ventilation



x-well®

pendulum fan D13

For ventilating apartments and houses

- Easy to install: No wiring thanks to Bluetooth communication, only 230 V connection
- **Versatility:** Also suitable for window reveals
- **Installation:** Installation brick for easy installation in the bare brickwork available
- **Efficiency:** High heat recovery of 87 % with minimal energy consumption (energy efficiency class A, A+ with sensor)
- Low noise: Low acoustic power level of just 40 dB(A) for pleasant operation
- **Compact:** Installation depth of only 200 mm for space-saving integration

10 years of
KERMI residential
ventilation



x-net[®] systems with insulation

The best choice for new-builds

- **Efficiency:** A combination of insulation with underfloor heating reduces energy costs and ensures a pleasant, cosy climate
- **Heat distribution:** The x-net connect systems prevent uncontrolled heat dissipation in feed pipes
- **System versatility:** Select from proven systems such as x-net[®] C11 knob system, C12 tackler system and C17 klett system for different requirements
- **Comfort:** x-net panel heating and cooling systems provide an ideal indoor climate all year round thanks to innovative technology
- **Installation:** Perfectly matched system components, a clever installation system, and innovative tools allow clean, safe and, efficient installation – perfect for one-person installation



x-net[®] insulation-free systems

Universal problem solver

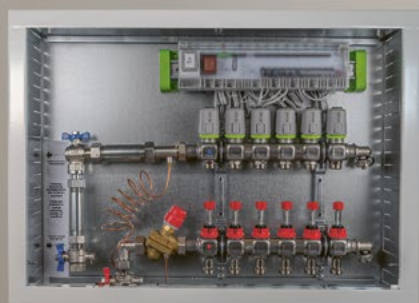
- **Use:** On all insulating materials, for high sound insulation requirements but also without an insulating layer
- **Installation height:** Systems without insulation also allow for low panel heating structures (complete floor mounting structure possible from 17 mm)
- **Versatility:** You can choose between a clip system (x-net[®] C16), a klett panel (x-net[®] C17) or a thin layer system (x-net[®] C15)
- **Sustainability:** Save CO₂ by reducing the screed thickness to 36 mm
- **Functionality:** Suitable for heating and cooling
- **Installation:** Maximum flexibility and unbeatable installation speed
- **Comfort:** Quick reaction time, light static weight and reduced drying times



Home station pro

For maximum efficiency and minimum installation time

- **Efficiency:** 10 % better heat transfer, 30 % less pressure loss, 5 % less pump energy and insulation hood
- **Installation:** Quick installation thanks to a high degree of pre-assembly and a perfectly coordinated modular design
- **Technology:** 37 kW, up to 75 kW, for use with radiators, panel heating and heat pumps in a 5-pipe system
- **Hygiene:** Stainless steel heat exchanger and legionella test not required (3 litre rule)
- **Safety:** Two integrated differential pressure controllers for hydraulic balancing, legionella test not required (3 litre rule)
- **Quality:** High-quality components for a long service life



pre-assembled and pre-wired manifold cabinet

Easier. Safer. Quicker.

- **Installation:** 30 minutes less time required thanks to pre-assembly and pre-wiring
- **Sustainability:** Reduction in transport volume and 35 % less packaging waste
- **Technology:** High energy efficiency through automatic hydraulic balancing, TÜV certified
- **Logistics:** Assignment on construction site to floor/flat using specific labels
- **Safety:** Error-free installation and clear electrical interface



x-net® tools

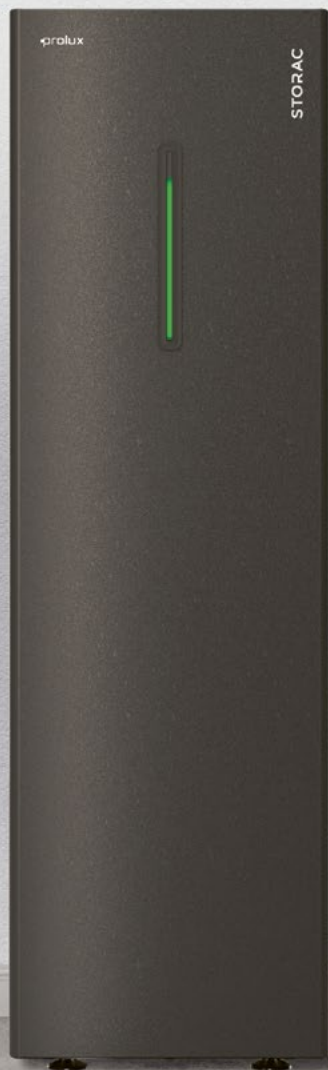
Clever solutions for efficient assembly processes

- Installation time: All tools are designed to minimise working time. Whether quick clip installation with the x-net® C16 clip former, unrolling the pipes without twisting by using the x-net® unrolling unit or efficient pipe connection with the x-net® heat-cutter connect
- **Sustainability:** Focusing on durability and saving resources. Robust construction and clever designs ensure that the tools remain reliable for years of use
- **Handling:** The compact and ergonomic design makes it noticeably easier to handle. Folding unrolling units, portable cases and adjustable heating outputs ensure maximum flexibility in use.
- **Safety:** All tools offer reliable safety features, such as consistent clip forming with no need for force, a stable design and construction for continuous operation, making work as safe and efficient as possible



Products

PROLUX



STORAC AC 2/6

The most secure investment in your future

- **Use:** For homes and smaller solar panels
- **Design:** Triple award-winning innovative technology, reusable raw materials, and great visual appeal
- **Compact:** Easy to install in standard installation situations due to manageable space requirements
- **Safety:** No flammable raw materials, integrated emergency power supply
- **Sustainable:** No lithium, cobalt or nickel and easy to recycle, Made in EU
- Capacity retention: Longest service life with sustained full capacity $\geq 95\%$ after 20 years
- **Technology:** Parallel operation with flexible cascading for home, residential and commercial applications
- Self-sufficiency: Independence increases, electricity costs decrease
- Future-proof: Long service life thanks to reliable redox flow technology
- **Modularity:** Replaceable parts for maximum flexibility and durability



reddot winner 2023

DESIGN **PLUS**
powered by: **ISH**



STORAC AC 4/10

The most secure investment in your future

- **Use:** For commercial use and larger solar panels
- **Output:** 4 kW for maximum efficiency (top output 5 kW)
- **Capacity:** 10 kWh for power-hungry applications
- **Installation:** Easy to install as delivered in part segments
- **Technology:** Parallel operation with flexible cascading for home, residential and commercial applications
- **Safety:** No flammable raw materials, integrated emergency power supply
- **Sustainable:** No lithium, cobalt or nickel and easy to recycle, Made in EU
- **Capacity retention:** Longest service life with sustained full capacity $\geq 95\%$ after 20 years
- **Self-sufficiency:** Independence increases, electricity costs decrease
- **Future-proof:** Long service life thanks to reliable redox flow technology
- **Modularity:** Replaceable parts for maximum flexibility and durability

More than a system

More than a system

We are shaping the building technology of the future

In an increasingly complex world in which innovations and new technologies determine everyday life in the building technology sector, we stand for first-class and holistically thought-out indoor climate solutions.

≈ 3.000

employees

Europe-wide

sales network

5

R&D centers



● Sales ● Manufacturing ○ R&D centers

More than a system

Partnership at your side

„As a fully competent partner, regardless of the size, type and scope of the project, we are at your side throughout Europe with our four System Brands and further specialized Focused Brands.

We manufacture our wide range of products at seven state-of-the-art production sites. Intelligent systems for heating, cooling, ventilation and energy storage are developed in five focused development centers. For an industry in which no two projects are the same.“

System Brands



Focused Brands



PZP HEATING a.s.



More than a system

We are part of the energy transition

Our products offer outstanding quality and stand for future-oriented technologies. They can be optimally combined with each other or easily integrated into existing systems.

We think about future generations and not only develop products that are at the heart of the energy transition, but also think through energy management holistically and sustainably.

Because we focus on people.

We think ahead: and beyond

In addition to consistently installation-optimized products, we offer you the widest range of products on the market and provide expert support from planning to installation. Everything from a single source and directly in your area.

So that you can devote your time to your customers.

With the holistic expertise of the entire Group, which creates first-class indoor climate solutions for future generations, we ar

»More than a system.«

Products arbonia



HPC heat pump convector

Heat efficiently. Cool comfortably.

- **Efficiency:** Outstanding sound-/ power ratio
- **Use:** Particularly quiet operation, ideal for sensitive areas such as care homes or bedrooms
- **Technology:** System temperatures as with underfloor heating, optimised for heating at 35/30 °C
- **Output:** Powerful cooling without condensation
- **Versions:** Always fits thanks to 24 different connection versions. Ideal when refurbishing with traditional built-into-wall and wall brackets
- **Installation:** Quick and uncomplicated installation and flexible connections, lightweight
- **Control:** Simple, intuitive and self-explanatory control
- **Design:** Available in countless trendy colours





Trench convectors

Aesthetics and functionality in a single air-conditioning system

- **Individual:** Customised designs to the nearest millimetre for individual requirements
- **Sound:** Virtually silent cross-flow fan and powerful at low flow temperatures
- **Efficiency:** Powerful fan models for low flow temperatures
- **Comfort:** A new dimension in heating, cooling and ventilation
- **Installation:** Time saving due to factory pre-assembled components
- **Design:** Attractively shaped covers in many versions and materials, as linear or roll-up grilles





Cross[®] radiant ceiling profiles

Design and technology simply connected

- **Installation:** Very easy installation thanks to patented connection system and being very lightweight
- **Universal:** For heating and cooling, for wet rooms (corrosion-resistant) and also for use at low flow temperatures, such as with heat pumps
- **Versions:** Cascade solutions or single line
- **Technology:** 360° radiant heat up to heights of 26 m
- **Comfort:** Maximum comfort thanks to natural heat radiation
- **Design:** Universal design from industrial to sophisticated, can be aesthetically integrated into a wide range of room situations



Column radiators

Robust and uniquely versatile

- **Efficiency:** High heat output with minimal dimensions thanks to the optimal ratio of radiant heat and convection
- **Individual:** Almost any dimensions, including curved or angled versions
- **Compliance:** For all applications – VDI 6036-compliant and user-friendly fixing
- **Versions:** Hygiene version, DIN-replacement solution or all-electric
- **Safety:** Rounded corners and edges to prevent accidents and make it easy to clean
- **Design:** Highly customisable colour options, trend colours and galvanised finish





Fan coils

Condiline®

Efficient air conditioning for all types of room

- **Versions:** For walls and ceilings, with and without covers and a wide range of accessories
- **Sound:** Virtually silent yet with a high output range with infinitely variable EC motors
- **Output:** Impressive cooling output of up to 15 kW with ceiling cassettes
- **Comfort:** Reach desired temperature quickly and enjoy optimal air distribution for a pleasant indoor climate
- **Service:** Easy to maintain thanks to filters that are easy to access and clean
- **Sustainable:** Operates with water, a natural coolant
- **Design:** Can be discreetly integrated into any architecture thanks to an unobtrusive and appealing design







Kermi GmbH

Pankofen-Bahnhof 1
94447 Plattling
Deutschland

www.kermi.com

Arbonia Riesa GmbH

Industriestraße A 11
01612 Glaubitz
Deutschland

www.arbonia-solutions.com